

Seekers

— PARK HOMES —

Selling Park, Lodge & Leisure homes

Seekers Estate Agents
183 Victoria Road, Aldershot,
Hampshire, GU11 1JU

Telephone: 01252 313554
Email: office@seekersestateagents.com

www.seekersparkhomes.co.uk

**46 BRYANT ROW, LAKEVIEW RESIDENTIAL
PARK, CUMMINGS HALL LANE, NOAK
HILL, ROMFORD, ESSEX, RM3 7LE**



- *1 BEDROOM PARK HOME*
- *BUILT CIRCA 1990 BY OMAR*
- *36 X 12 MODEL*
- *MAINS GAS CENTRAL HEATING*
- *DOUBLE GLAZING*
- *SEMI RETIREMENT 50 YEARS +*
- *PETS AND DOGS WELCOME BY PERMISSION*
- *PARKING IN CAR PARK*
- *OWN GARDEN PLOT*
- *NO CHAIN FOR PROMPT SALE*
- *AVAILABLE FURNISHED*
- *VIEWING RECOMMENDED*

£140,000

46 BRYANT ROW, LAKEVIEW RESIDENTIAL PARK, CUMMINGS HALL LANE, NOAK HILL, ROMFORD, ESSEX, RM3 7LE

REF: 5825

This 1 bedroom park home comprises:

ENTRANCE HALL

Radiator, cupboard

LOUNGE

11'10 X 11'8

Front aspect, radiator, double glazing, tv point, telephone point, real flame gas fire with back boiler for central heating with a decorative surround, feature vaulted ceiling

KITCHEN/DINING ROOM

12'8 X 11'8

A range of laminated eye and base level units, laminated roll top work surfaces, stainless steel sink, extractor fan, airing cupboard, breakfast area, radiator, double glazing

BEDROOM 1

10'0 X 7'9

Rear aspect, radiator, double glazing, two double fitted wardrobes, drawers, overhead cupboards, dressing table unit

BATHROOM

A coloured suite comprising enclosed bath, pedestal basin, w/c, radiator, frosted double glazed window

PARKING

Parking in car park

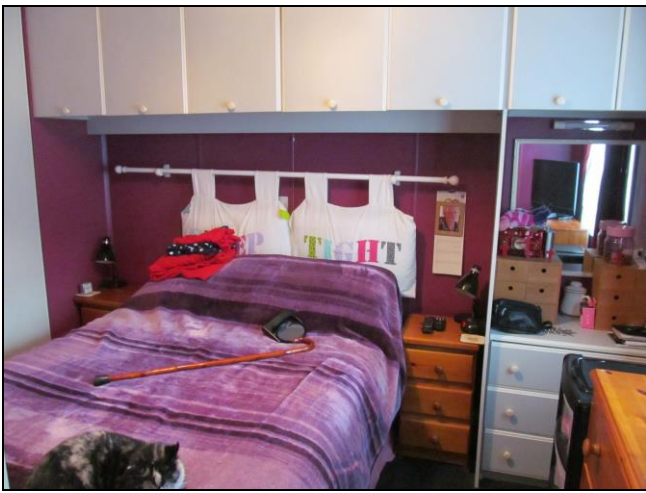
PARK STATUS

*Semi Retirement park 50 years +
Pets and dogs welcome by permission*

GARDEN

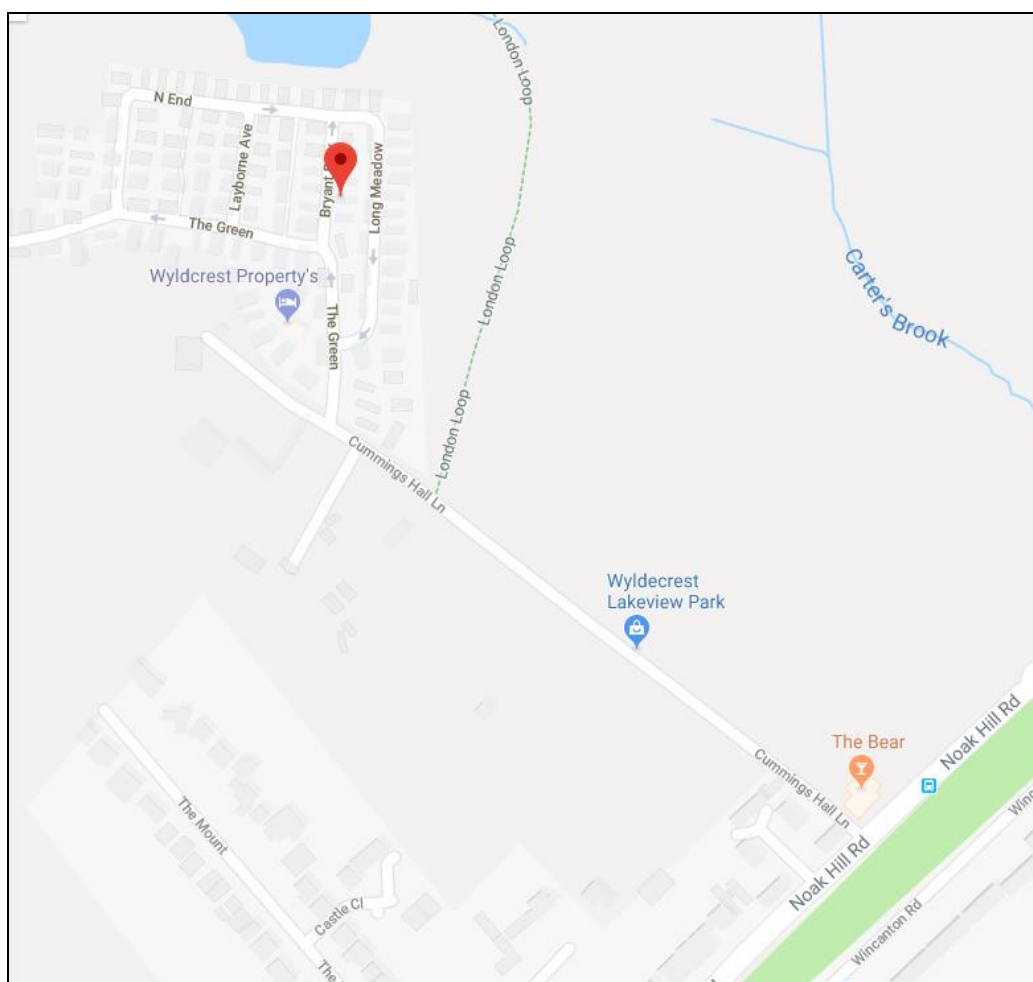
Own garden plot with shed & patio







DIRECTIONS



The agent has not been able to test any apparatus, equipment, fixture, fittings or services and so cannot verify they are in working order, or fit for their purpose.

Under the Mobile Home Act 2013 you must not rely on the park and home information provided in these details, you must seek verification prior to purchase from the vendor. We would also advise using a specialist surveyor and specialist legal advice which we can recommend.